



# P A S I

## Professional Abatement Services, Inc.



**Asbestos**



**Mold**



**Lead**



**Demolition**

### You owe yourself a breath of fresh air, WE CAN HELP.!

Founded in 2000, Professional Abatement Services Inc. was established by Danny Bennett for the purpose of offering professional abatement services to a wide range of clientele. Danny started off as an abatement worker and worked his way up to the position of field superintendent/estimator.

After 12 years in the field, with an excellent understanding of all the aspects of an abatement company, Professional Abatement Services Inc. has satisfactorily completed hundreds of asbestos, lead and mold abatement projects.

Professional Abatement Services Inc. Management team has more than 35 combined years of experience in the field. All abatement workers are trained and certified through the Michigan Department of Consumer & Industry Services and state approved training courses. PASI is a fully insured and licensed union contractor. We maintain all required records of the certifications for licensing, training, and medical surveys of all employees.

### MISSION STATEMENT Our mission combines the following three aspects.

**Dedication:** Professional Abatement Services Inc. is 100% dedicated to the service of the Owner and his project. We will insure that the schedule is met and the project is completed and accepted to the Owners satisfaction.

**Quality:** Quality is essential to the staff at Professional Abatement Services Inc. We know that in dedicating ourselves to the project, we must also perform to the highest degree of quality. We must deliver quality work in order to develop and continue a long and lasting relationship with the owner.

**Performance:** Our reputation of high performance to our Customer is of the utmost importance in the Achievement of Professional Abatement Services Inc.'s goal.

*With P.A.S.I.'s educated and experienced staff, every job is handled with enthusiasm, professionalism and honesty.*

*Our corporate policy focuses on: being quality driven, customer oriented, and responsive to the individual situation.*

phone: (313) 381-9800 [www.pasi.us](http://www.pasi.us) fax: (313) 381-6500



# P A S I

## Professional Abatement Services, Inc.



Asbestos



Mold



Lead



Demolition

### Environmental Division



The Environmental Division of Professional Abatement Services Inc. acts as a full service abatement and cleaning contractor. Our primary concern is to deliver professional, quality, and courteous services. Our firm's devotion to industry guidelines ensures that P.A.S.I. provides a superior level of service to all of our customers.

Our services include preparing estimated project costs for: asbestos, lead abatement, mold hazards, and non-hazardous materials. We also evaluate if an environmental hazardous condition exists and then offers a solution.

**Asbestos** was widely used in building construction. It is a mineral-based material that is resistant to heat and corrosive chemicals. It includes: crysotile, amosite, and crocidolite. Depending on the chemical composition, fibers may range in texture from coarse to silky. The properties which make asbestos fibers so valuable to industry are its high tensile strength, flexibility, heat and chemical resistance, and good frictional properties.

### We Remove Asbestos Containing Materials from:

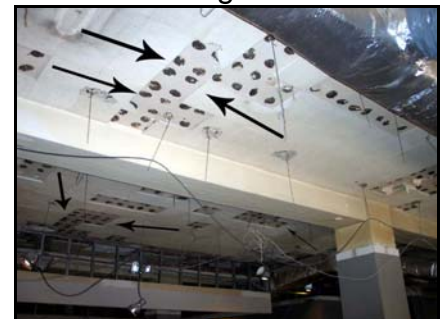
• Pipes / Ducts



• Fittings



• Ceiling Tiles



• Flooring

• Beams

• Walls

• Electrical Cables

• Insulation

• Tanks / Boilers

phone: (313) 381-9800

[www.pasi.us](http://www.pasi.us)

fax: (313) 381-6500



# P A S I

## Professional Abatement Services, Inc.

Asbestos    Mold    Lead    Demolition

Professional Abatement Services Inc. has the experience, expertise, and the equipment to protect your staff and the environment from the hazards of asbestos containing materials. By using advanced systems, trained and certified workers can help you meet health and safety requirements.

Interested in having your floortile removed at the office or in the warehouse? We have the best product for the "BIG" jobs, **The Terminator 2000-e**. We have 3 of these machines in our artillery. The benefits, this machinery will bring to the jobsite is unmatched. It is estimated that one machine can outwork 3-7 men in an 8 hour day. Talk about a savings on man hours. We also have over 50 air machines (cleaners) in our fully stocked warehouse which are usually required when performing hazardous waste removal. A negative pressure enclosure ensures that no particles leave the jobsite.



Ironically, asbestos was once viewed as the miracle fibrous mineral that would save lives. Readily available in abundant supplies, this fire-retardant material was economical to mine and easy to apply. Its practical benefits were so great that most public buildings and many homes were required by building codes to fireproof with asbestos.

### ASBESTOS RELATED DISEASES

**Asbestosis** - This is the first of three major lung diseases. It is a chronic (long-term) disease in which the alveoli are damaged by scar tissue. The scar tissue replaces the normal cells and the lung's ability to absorb oxygen is reduced. A person suffering from asbestosis will eventually feel short of breath. Asbestosis is a potentially serious, incurable disease that, in its most severe form can be fatal.

**Lung Cancer** – Asbestos-related lung cancers are virtually identical to the lung cancer that cigarette smokers develop. It is important to emphasize that the lung cancers caused by breathing asbestos dust have a dose response just like asbestosis. At least 10-15 years must pass after the first exposure to asbestos before any lung cancer is caused.

**Mesothelioma** – this is an uncommon cancer that affects the lining of the lung or the lining of the abdomen. It occurs exclusively in people exposed to asbestos dust. The main symptom experienced by an afflicted person is pain in the chest or abdomen for no apparent reason. This cancer is always fatal, often with rapid deterioration and death within one year following the diagnosis.

**Pleural Plaques** – Asbestosis, lung cancer and mesothelioma are the three major lung diseases caused by asbestos dust. Pleural plaques, while not as serious as the other three, are also caused by the inhalation of asbestos dust. This condition is characterized by thickening of the lining of the lung.

phone: (313) 381-9800    [www.pasi.us](http://www.pasi.us)    fax: (313) 381-6500



# P A S I

## Professional Abatement Services, Inc.



Asbestos



Mold



Lead



Demolition

### Mold Abatement



Professional Abatement Services Inc. specializes in providing a unique environmental service; structural and AC Mold decontamination. Because P.A.S.I. realizes the severity of this issue to those who suffer from mold allergies and asthma, we offer a highly specialized mold decontamination service. We've carefully adapted our existing expertise in creating negative pressure containment for asbestos abatement, to extend to mold contamination situations. If the issues involved reach beyond our services, we have access to an I.A.Q. professional to provide you with the services you need.

Since the late 1990s, concern over toxic mold has mushroomed into congressional hearings, dramatic increases in claims and lawsuits, demands for reform by the insurance and real estate industries. Yet the mere threat of a mold problem can jeopardize home sales, drive up insurance costs and force building owners into costly -- and sometimes needless -- tests and cleanups, according to the Insurance Information Institute. The institute, a national lobbying and public relations agency for the insurance industry, has estimated that mold claims in the United States cost \$1.2 billion in 2001.



It is widespread and everywhere, typically found in moist areas. Water from floods, roof leaks, and window leaks can cause serious mold damage. Molds are naturally occurring, airborne organisms that grow in indoor and outdoor environments. During construction, mold spores can easily enter a building's envelope. Moisture and the organic material in many construction materials provide a suitable environment for mold growth. For example, *Stachybotrys chartarum* (also known as *S. atra*) is a greenish black mold that grows on wet sheetrock and cellulose tiles.

#### 4 tips can be helpful for property owners who have mold-risk concerns:

- 1) Be aware of the problem. Understand that all buildings and not just old structures have the potential to carry mold.
- 2) Help avoid moisture build-up by fixing all leaks and identifying any traces of previous leaks.
- 3) Seek help from Professional Abatement Services Inc. to determine if action is needed to avoid health risks.
- 4) Remediation: Clean the entire area.

phone: (313) 381-9800 [www.pasi.us](http://www.pasi.us) fax: (313) 381-6500



# P A S I

## Professional Abatement Services, Inc.



**Asbestos**



**Mold**



**Lead**



**Demolition**

### Demolition Division

The Selective Demolition Division of Professional Abatement Services Inc. is a SBE full service union contractor.

Our services include preparing estimated costs for demolition projects. P.A.S.I. has the equipment, knowledge, and background to perform any job in a safe and timely manner.

#### The following outlines some of our field demolition capabilities:



#### **-Mechanical**

Boilers, Chillers, A.H.U.'s, Cooling Towers, Pumps, Pipes, Motors, Tanks, Vessels, etc.

#### **-Architectural**

Interior Demolition of Walls, Floors, Ceilings, Structural Steel, Masonry, Complete Building Demolition, etc..

**Water Tower Removal**



**Complete Building Demo**



**Removal in Confined Spaces**



phone: (313) 381-9800

[www.pasi.us](http://www.pasi.us)

fax: (313) 381-6500



# P A S I

## Professional Abatement Services, Inc.



Asbestos



Mold



Lead



Demolition

## Statement of Company Safety Policy

**Safety is the concern of all, from every person in the field, to those in the offices, and the top management.** The employer has a moral and legal obligation to assure that each employee is given "state of the art" protection while working in potentially dangerous environments – such as asbestos and lead exposures. In the past, the construction industry has accepted many unsafe practices as a part of doing business. Because of this, many man hours have been lost and companies have incurred high insurance expenses. Not only does the company suffer expenses from accidents, but more importantly, the employee suffers personal and financial losses as well. We must be able to do all work in a safe manner.

**An effective safety program does not happen by itself.** It takes the support of everyone and in particular, the superintendents and foremen who must enforce the safety rules. A good safety program will not only decrease the accident rate, but also increase morale and security by actively uniting management and employees in common concern. Constant effort must be made to eliminate carelessness, a principle cause of injury accidents. Employees must realize all accidents can be prevented.

**It is the policy of the Professional Abatement Services, Inc., that all work shall be done in as safe of a manner, as possible. P.A.S.I. will promote safety by:**

- Working within all government laws and regulations.
- Following all P.A.S.I.'s work rules that have been developed through experience.
- Creating a Safety Advisory Committee consisting of Danny Bennett, Danny Frey and the Coordinator from the job.

**Employees function will be to:**

- Look for better and safer job methods.
- Provide educational programs for all employees on safe working conditions and habits through meetings and individual on-the-job instructions.
- Establish methods for discovering whether safety rules and procedures are followed.
- Continually communicate with top management on the progress of the Accident Prevention Program.

phone: (313) 381-9800 [www.pasi.us](http://www.pasi.us) fax: (313) 381-6500



# P A S I

## Professional Abatement Services, Inc.



**Asbestos**



**Mold**



**Lead**



**Demolition**



P.A.S.I. is a member of the nationally recognized Safe 2 Work program. Although this program is considered sufficient training by many contractors, this is not the only training certification our employees have. When dealing with hazardous materials, more efficient training methods are constantly being used. Safety training is an ongoing event.

### Employees and Supervisors are required to train in the 14 specialized areas listed below.

- **Asbestos Awareness:** This course explains the characteristics of asbestos, ways to avoid exposure, and how to safely conduct work activities around infected areas.
- **Cadmium Safety:** This course describes the hazards and effects of cadmium exposure, identification procedures, and it explains engineering controls and safe work practices.
- **Confined Space Entry:** This course illustrates how to identify permit spaces and their hazards as well as the OSHA permit space program.
- **Electrical Safety:** This course introduces the workers to the principles of electrical hazards, procedures and correct responses during an electrical emergency.
- **Fall Protection:** This course describes the dangers of working on elevated surfaces, and the various components which make up proper fall arrest gear and positioning devices.
- **Fire Safety:** This course explains the causes of fire, safe housekeeping measures that can be taken to prevent fires and emergency response procedure in the event of a fire.
- **Hazcom:** This course teaches OSHA's Hazard Communication Standard, how Material Safety Data sheets are used, and how to work safely around chemicals.
- **Ladder Safety:** This course explains the causes for ladder accidents, gives information to prevent falls, and shows the proper way to use ladders to avoid accidents.
- **Lead Safety:** This course describes the hazards and effects of lead exposure, procedures for monitoring its presence, and safe work practices when working around lead.
- **Lockout/Tagout:** This course covers OSHA's Lockout/Tagout requirements, factors involved in the process and OSHA's 6 step Lockout/Tagout procedure.
- **Personal Protective Equipment:** This course is to train and to motivate workers to consistently and correctly wear the appropriate PPE for the hazard on-the-job.
- **Scaffold Safety:** This course helps students recognize scaffold hazards, understand the hazards associated with different scaffolds, how to control those hazards and use properly.
- **Silica Safety:** This course describes the hazards and effects of exposure to silica, procedures for monitoring its presence, and safe work practices when around silica.
- **Trenching and Shoring:** This course covers the basics of trench safety, how to classify soil types, make a trench safe, and properly use benching, sloping, and trench boxes.

phone: (313) 381-9800 [www.pasi.us](http://www.pasi.us) fax: (313) 381-6500



# P A S I

## Professional Abatement Services, Inc.

Asbestos    Mold    Lead    Demolition

*Letter Regarding Work Performed at a School, this is typically what people about our projects.*

August 30, 2002

Mr. Dan Bennett, President  
Professional Abatement, Inc.  
19123 Allen Road  
Melvindale, Mi, 48122



Dan:

I just wanted to express my gratitude for the quality of the work performed and professionalism displayed by your employees at the Waterford Mott High School Additions Project. I have been very impressed by your General Foreman, Jake, as well as, the field foreman Dean, in regard to their willingness to "Do the right thing" in regards to safety and the special concerns in dealing with an occupied high school. They have taken the necessary measures to prevent dust, fumes, etc. from entering the school in areas directly adjacent to construction areas. They adjusted their work sequencing to meet the needs of the school and my schedule without affecting productivity.

It is evident that your employees are an extension of yourself. Not a day goes by that they will not check in at the trailer to confirm that they are taking care of all my issues according to the priority they need to be completed. And I will always get a phone call at the end of the day with a report on what was completed and what the anticipated completion will be for the following day.

I cannot say enough about the "Whatever it takes" attitude you and your company express on the jobsite. This type of company is very rare in our industry and I am glad to have you on this project.

I thank you and your company for your hard work and dedication and look forward to working with you on many projects in the future.

Sincerely,  
JM Olson Corporation

*Thomas J. Beauchamp*

Thomas J. Beauchamp  
Project Superintendent

phone: (313) 381-9800    [www.pasi.us](http://www.pasi.us)    fax: (313) 381-6500



# **P A S I**

## **Professional Abatement Services, Inc.**



**Asbestos**



**Mold**



**Lead**



**Demolition**

**Contact Us Directly**

Please feel free to contact us in regards to any questions about our services and availability. We do offer free estimates and would be willing to meet with you and talk about some possible life saving options at your business or home.

**Danny Bennett, President**

Mobile Number: (313) 999-2332

E-Mail Address: DanBennett@pasi.us

**Rick Bennett, Vice President**

Mobile Number: (313) 999-4353

E-Mail Address: rbennett@pasi.us

**Dave Bennett, Superintendent/Supervisor**

Mobile Number: (313) 790-4758

E-Mail Address: DaveBennett@pasi.us

**Lloyd Whitaker, Consultant/Estimator**

Mobile Number: (248) 388-9133

E-Mail Address: Lwhitaker@pasi.us

**We are located at the following address:**

**19123 Allen Road  
Melvindale, Michigan  
48122**

phone: (313) 381-9800 **www.pasi.us** fax: (313) 381-6500